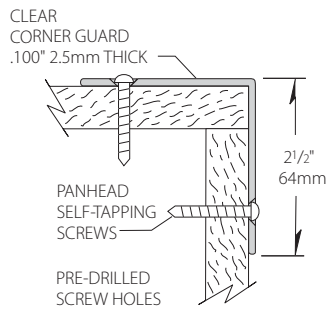
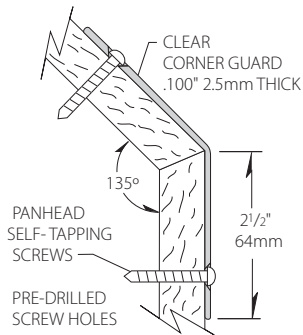
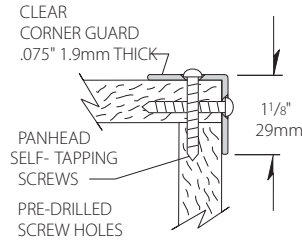
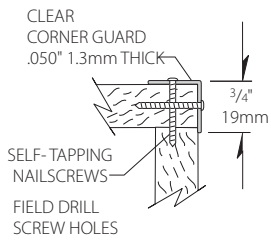


# Clear

## Corner Guards



- Allows existing wall color or pattern to show through
- Three wing size options: 3/4" (19mm), 1-1/8" (29mm) and 2-1/2" (64mm)
- .050" (1.3mm), .075" (1.9mm) and .100" (2.5mm) thicknesses
- Manufactured in 4' (1.22m) and 8' (2.44m) standard heights, custom heights available
- Optional: 2" wing 90°, 2-1/2" wing 90° Bullnose, 2-1/2" wing 135°
- Optional: Adhesive backed
- Optional Flexible Clear Corner Guard: Bends to any degree which allows imperfect corners to have tight fitting corner protection:
  - 1"(25.4mm) x 1"(25.4mm), .045" (1.1mm), flexible angle 45°-180°
  - Flexible Clear Corner Guard only available with self-adhesive backing

IPC.436/REV.6

# Clear Corner Guards

## Suggested Specifications

### PART 1 - GENERAL

#### 1.01 SUMMARY

A. Corner guard system for wall protection

#### 1.02 SECTION INCLUDES

A. Clear Corner Guards

#### 1.03 REFERENCES

A. American Society for Testing and Materials (ASTM)

B. Underwriters Laboratory (UL)

#### 1.04 SYSTEM DESCRIPTION

A. Performance Requirements: Provide Corner Guard Systems that conform to the following requirements of regulatory agencies and the quality control of IPC Door and Wall Protection Systems, InPro Corporation.

1. Fire Performance Characteristics: Provide clear materials with V2 rating as tested in accordance with UL94.

#### 1.05 SUBMITTALS

A. Product Data: Manufacturer's printed product data for each type of corner guard specified.

B. Detail Drawings: Mounting details with the appropriate adhesives for specific project substrates.

C. Samples: Verification samples of corner guard, 8" (203mm) long, in full size profiles of each type and color indicated.

D. Manufacturer's Installation Instruction: Printed installation instructions for each corner guard.

#### 1.06 DELIVERY, STORAGE AND HANDLING

A. Deliver materials in unopened factory packaging to the jobsite

B. Inspect materials at delivery to assure that specified products have been received.

C. Store in original packaging in a climate controlled location away from direct sunlight.

#### 1.07 PROJECT CONDITIONS

A. Environmental Requirements: Products must be installed in an interior climate controlled environment.

#### 1.08 WARRANTY

A. Standard IPC Limited Lifetime Warranty against material and manufacturing defects.

### PART 2 - PRODUCTS

#### 2.01 MANUFACTURER

A. Acceptable Manufacturer: IPC Door and Wall Protection Systems, InPro Corporation, PO Box 406 Muskego, WI 53150 USA; Telephone: 800.222.5556, Fax: 888.715.8407, www.inprocorp.com

B. Substitutions: Not permitted

C. Provide all corner guards and wall protection from a single source.

#### 2.02 MANUFACTURED UNITS

A. Corner Guard Profile

1. Clear Corner Guard Options

Size Thickness Shape

3/4" (19mm) x 3/4" (19mm) .050" (1.3mm) 90°

1 1/8" (29mm) x 1 1/8" (29mm) .075" (1.9mm) 90°

2 1/2" (64mm) x 2 1/2" (64mm) .100" (2.5mm) 90°

2 1/2" (64mm) x 2 1/2" (64mm) .100" (2.5mm) 135° 4'

(1.22m) and 8' (2.44m) standard heights

Custom heights available

2. Flexible Angle, Clear Corner Guard Options:

Size, Thickness, Shape

1" (25.4mm) x 1" (25.4mm), .045" (1.1mm),

flexible angle 45°-180°

Standard Heights – 4' (1.22m) and 8' (2.44m)

Only available with self-adhesive backing.

#### 2.03 MATERIALS

A. PC/PETG: Clear corner guards shall be extruded from clear thermo plastic material

#### 2.04 COMPONENTS

A. Fasteners: All mounting system accessories appropriate for substrates indicated on the drawing shall be provided.

B. Adhesive Backed: Provide polycarbonate corner guards with self adhesive backing.

#### 2.05 FINISHES

A. Surface shall be smooth.

### PART 3 - EXECUTION

#### 3.01 EXAMINATION

A. Examine areas and conditions in which the corner guard systems will be installed.

1. Complete all finishing operations, including painting, before beginning installation of corner guard system materials.

B. Wall surface shall be dry and free from dirt, grease and loose paint.

#### 3.02 PREPARATION

A. General: Prior to installation, clean substrate to remove dust, debris and loose particles.

#### 3.03 INSTALLATION

A. General: Locate the corner guard as indicated on the approved detail drawing for the appropriate substrate and in compliance with the IPC installation instructions. Install level and plumb at the height indicated on the drawings.

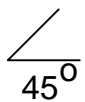
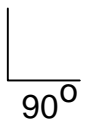
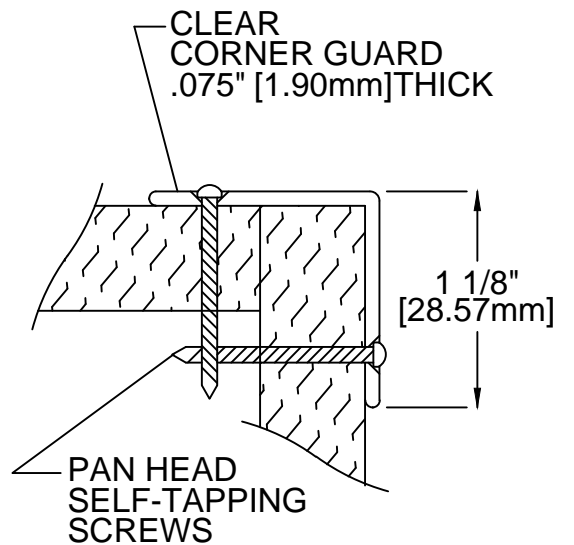
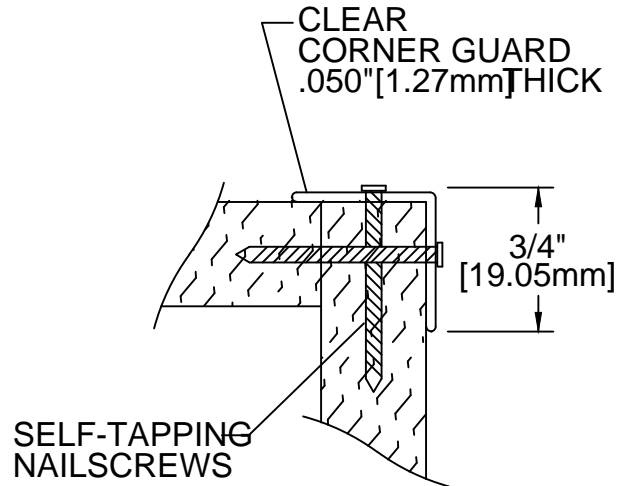
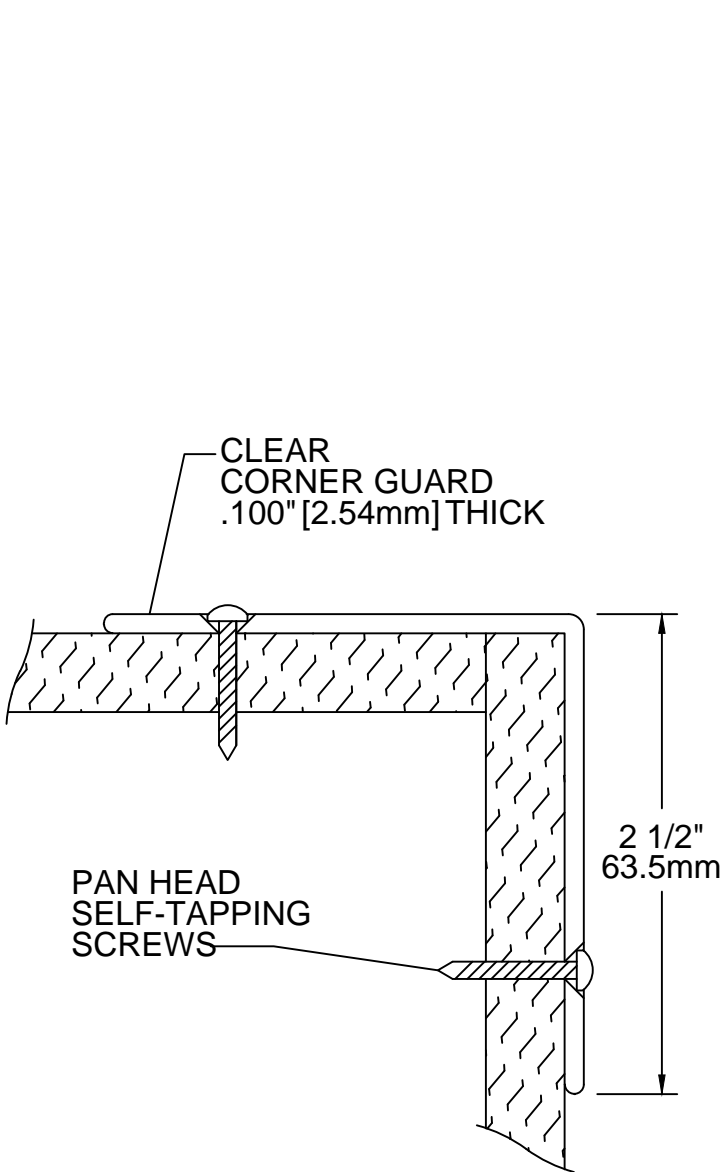
B. Installation of Clear Corner Guard

1. Screw-on: Apply to corner with self-tapping nail screws for 3/4" (19mm) guards and chrome plated screws for 1 1/8" (29mm) and 2 1/2" (64mm) guards that have pre-drilled mounting holes.

2. Adhesive Backed: Remove release liner from the back of the corner guard. Position corner guard on the wall and press into place. Roll corner guard with an extension roller.

#### 3.04 CLEANING

A. At completion of the installation, clean surfaces in accordance with the IPC clean-up and maintenance instructions. Allows existing wall color or pattern to show through



2 1/2" ONLY  
[63.50mm]